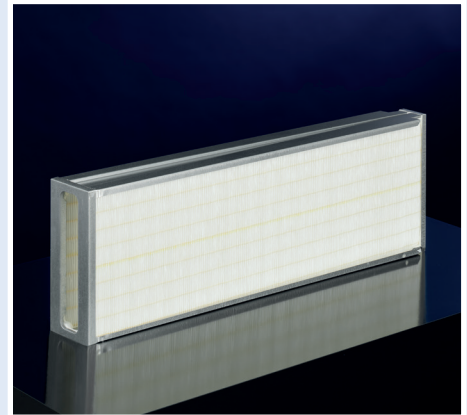


## Kompaktfilter PB-95

### Description

- compact panel filter with closely pleated KALTHOFF micro-glass fibre paper
- casing from galvanized steel sheet
- airflow direction and conditions for mounting optional at site
- for mounting in existing filtration plants special sealing strip 19 mm x 55 mm available



### Types

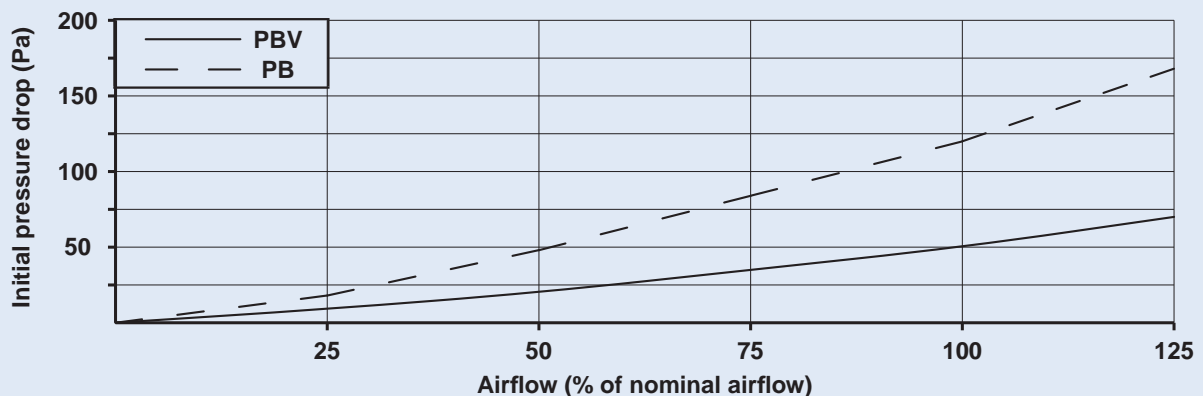
	Front Size (WxH)	Depth of cartridge (D)	Range of nominal airflow (100-125 %)
PB600-95	86,5x303 mm	600 mm	300-375 m <sup>3</sup> /h
PB600-95	86,5x202 mm	600 mm	200-250 m <sup>3</sup> /h
PB400-95	86,5x202 mm	400 mm	135-170 m <sup>3</sup> /h
PBV600-95	600x65,0 mm	202 mm	200-250 m <sup>3</sup> /h
PBV400-95	400x65,0 mm	202 mm	135-170 m <sup>3</sup> /h

### Technical Data

Filter class:	DIN EN 779	PBV F 9	PB F 9
Average arrestance:	DIN EN 779	> 98 %	> 98 %
Average efficiency:	DIN EN 779	> 95 %	> 95 %
Pressure drop at 100 % nominal airflow			
initial:	Pa	50	120
final (recommended):	Pa	300	300
Max. operation temperature:	°C	80	80
Max. operation moisture (rel. humidity):	%	80	80
Classification of inflammability:	DIN EN 13501	E	E

Technical data are being complied to the best of our knowledge. Responsibility cannot be accepted. We reserve the right of technical modifications. Version 1/15

### Pressure Drop



Ihr Partner für Filtertechnik

