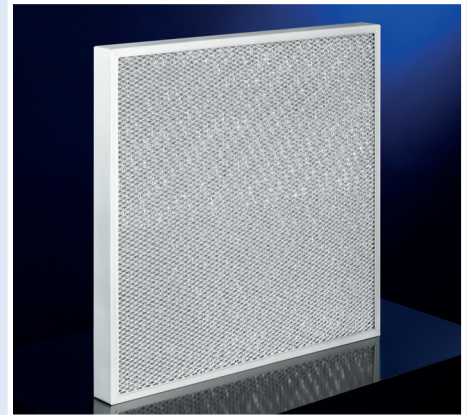


Filterzelle ST-AL/-EL

Description

- panel filter with flat sheet metal multi layers
- expanded metal screen on both sides
- regenerable
- ST-AL: with galvanized KALTHOFF steel frame and aluminium filter media
- ST-EL: with KALTHOFF stainless steel frame and stainless steel filter media as well



Types

Article	Size (WxHxD)	Range of nominal airflow (100-125%)
ST-AL/EL-20-592592	592x592x20 mm	1900-2400 m ³
ST-AL/EL-25-592592	592x592x25 mm	1900-2400 m ³
ST-AL/EL-50-592592	592x592x50 mm	1900-2400 m ³

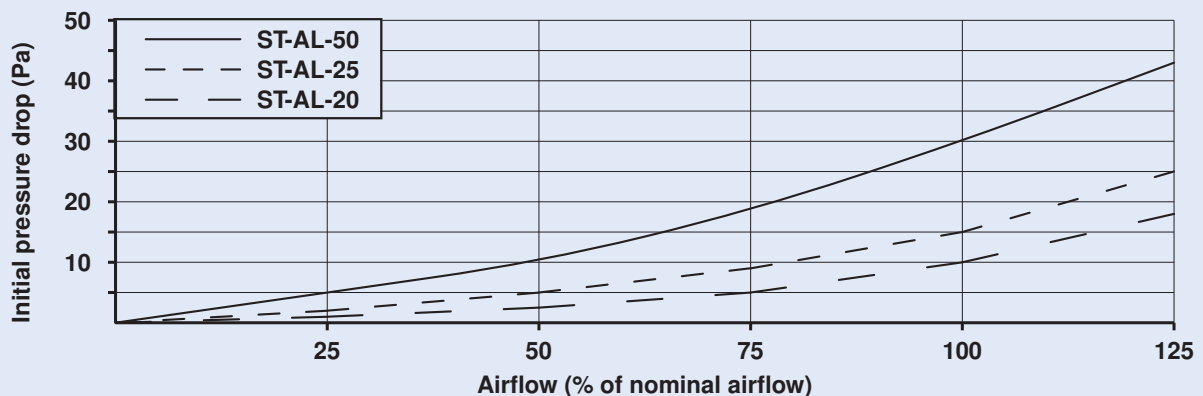
Different sizes available.

Technical Data

	ST-AL-20	ST-AL-25	ST-AL-50
Filter group acc. to DIN ISO 16890:	ISO Coarse 30%	ISO Coarse 30%	ISO Coarse 35%
Efficiency (ISO Coarse):	31%	31%	36%
Pressure drop at 100% nominal airflow			
initial in Pa:	10	15	30
final (recommended) in Pa:	400	400	400
Depth of filter in mm:	20	25	50
Max. operation temperature (Typ ST-AL) in °C:	150	150	150
Max. operation temperature (Typ ST-EL) in °C:	300	300	300
Max. operation moisture (rel. humidity) in %:	100	100	100
Class. of inflammability acc. to DIN EN 13501:	E	E	E

Technical data are being complied to the best of our knowledge. Responsibility cannot be accepted. We reserve the right of technical modifications. Version 7/20

Pressure Drop



Ihr Partner für Filtertechnik

