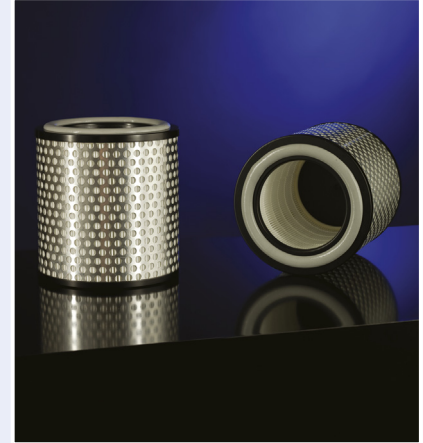


HEPA-CARTRIDGES – HD-13

Kalthoff-HEPA-Cartridges Kalthoff HEPA-Cartridges are made of high quality microfibre paper with textile thread spacers. The self-supporting media pack with its optimized pleating geometry is connected cylindrically particle-tight to the casing made of stove-enamelled galvanized sheet steel. The filter has a flat profile gasket and a protection grid of anodized aluminium.

Each filter panel of filter class H13 and better is single-tested according to EN 1822 and according to ISO 29463. All required technical data are labelled on the filter.



Casing material
Bottom and top: Stove-enamelled galvanized sheet steel
Protection grid: Anodized aluminium
Gasket
Continuous foam gasket

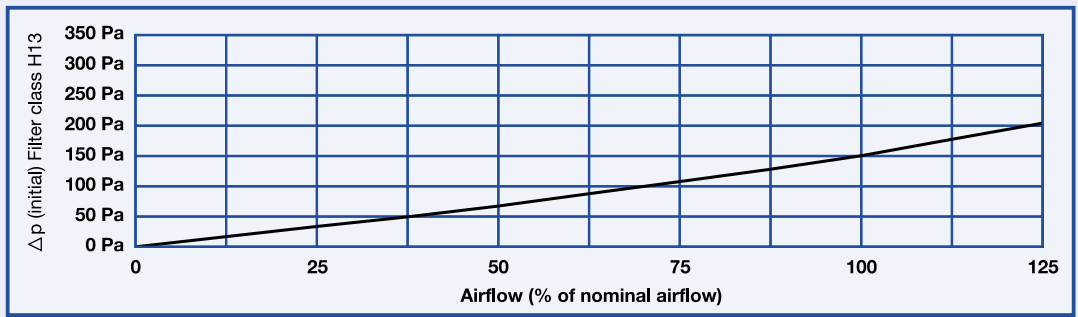
Technical Data

Filter class acc. to EN 1822	H13
Efficiency (MPPS)	≥ 99,95%
Initial pressure drop	150 Pa
Final pressure drop (rec.)	500 Pa
Max. operating temperature	80°C
Max. rel. humidity	80%
Inflammability acc. to DIN 53438	F1

Standards (other dimensions upon request)

Height [mm]	D _a [mm]	D _i [mm]	nominal airflow [m³/h]
180	175	110	130
227	175	110	170

Pressure drop vs. airflow



Subject to modification due to continuous improvement, Version 5/20

W 180/227 mm